

INSTALLATION INSTRUCTION

LED STEP LIGHT

TECHNICAL DATA:

Model	VT-1109 RD	VT-1109 sq
Watts	3W	3W
Lumens	270LM	270LM
Beam Angle	120°	120°
Shape	ROUND	SQUARE
Dimension	Ø80x51mm	80x80x51mm
Cut Out Size	ø62mm	ø62mm
Input Power	AC:220-240V, 50/60Hz	



3 YEARS WARRANTY

INTRODUCTION & WARRANTY

Thank you for selecting and buying V-TAC product. V-TAC will serve you the best. Please read these instructions carefully before starting the installation and keep this manual handy for future reference. If you have any another query, please contact our dealer or local vendor from whom you have purchased the product. They are trained and ready to serve you at the best. The warranty is valid for 3 years from the date of purchase. The warranty does not apply to damage caused by incorrect installation or abnormal wear and tear. The company gives no warranty against damage to any surface due to incorrect removal and installation of the product. The products are suitable for 10-12 Hours Daily operation. Usage of product for 24 Hours a day would void the warranty. This product is warranted for manufacturing defects only.

WARNING!

1. Please turn off power and read this instruction before starting the installation.
2. Installation should only be done by a certified electrician.
3. The light source of this luminaire is not replaceable, when the light source reaches its end of life the whole luminaire should be replaced.

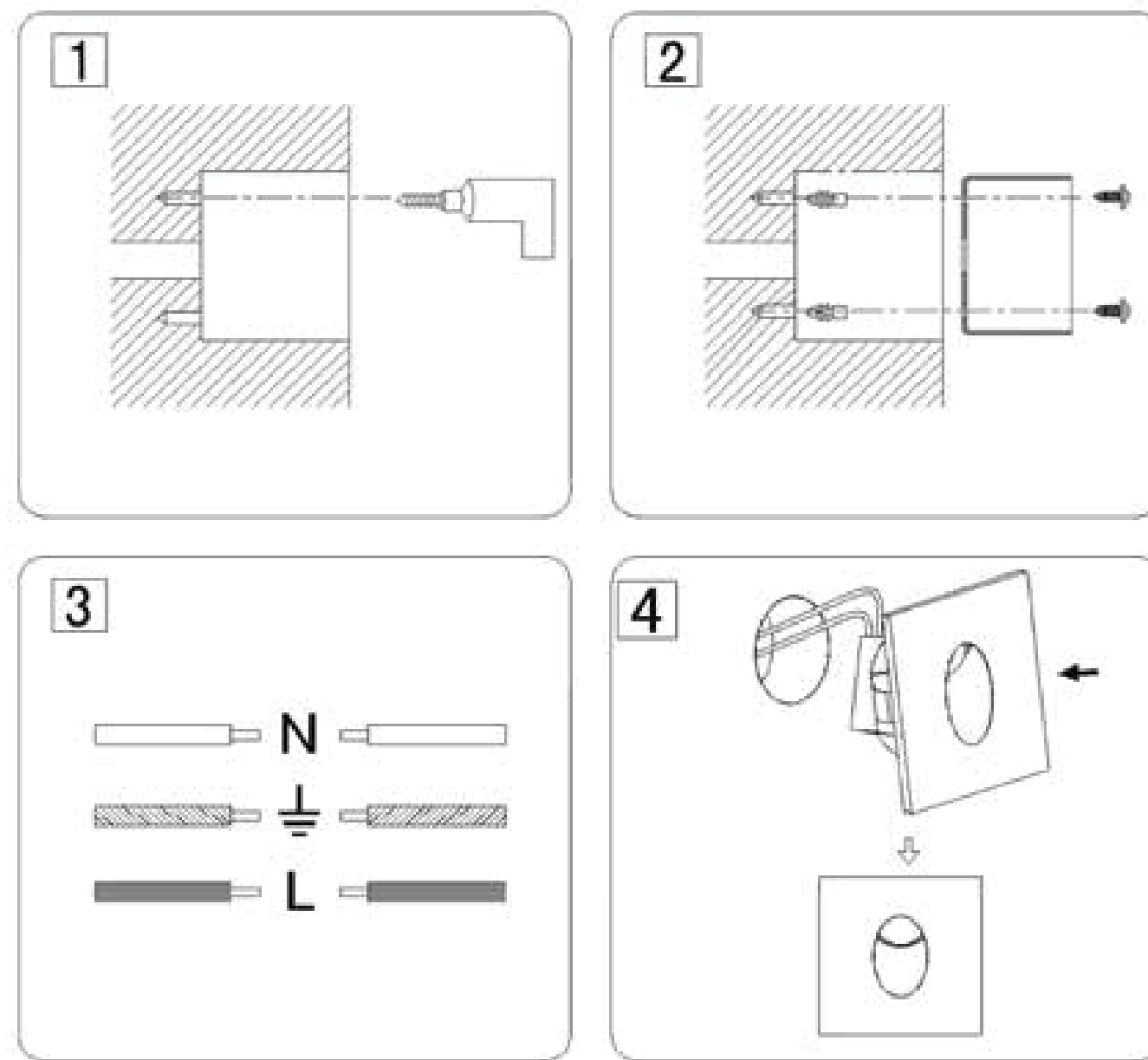


This marking indicates that this product should not be disposed of with other household wastes.



Caution, risk of electric shock.

INSTALLATION DIAGRAM



INSTALLATION INSTRUCTION

- Switch off the power before starting the installation
- Cut the holes by using an appropriate tool according to the cut-out size
- Fix the rubber stopper and then install the base of the lamp on the wall by using screws
- Connect the wires as per the wiring diagram
- Fix the lamp into the base
- Switch on the power and test the light

IN CASE OF ANY QUERY/ISSUE WITH THE PRODUCT, PLEASE REACH OUT TO US AT: SUPPORT@V-TAC.EU
FOR MORE PRODUCTS RANGE, INQUIRY PLEASE CONTACT OUR DISTRIBUTOR OR NEAREST DEALERS.
V-TAC EUROPE LTD. BULGARIA, PLOVDIV 4000, BUL.L.KARAVELOW 9B